

Card Player Cruises

Play Poker & Cruise to Exotic Ports

CardPlayerCruises.com

Please join us for our
New Zealand & South Pacific 14-Night Cruise
RT Sydney, Australia aboard
Royal Caribbean's Voyager of the Seas

November 9 - 23, 2013
From **Just \$1619*** per person
* Not including taxes



Itinerary

Day	Port ***	Arrive	Depart	Activity
09-Nov	Sydney, Australia		9:00 PM	
10-Nov	Cruising			
11-Nov	Cruising			
12-Nov	Noumea, New Caledonia	8:00 AM	4:00 PM	Docked
13-Nov	Cruising			
14-Nov	Lautoka, Fiji	9:00 AM	5:00 PM	Docked
15-Nov	Cruising			
16-Nov	Cruising			
17-Nov	Auckland, New Zealand	8:00 AM	8:00 PM	Docked
18-Nov	Tauranga, New Zealand	10:00 AM	8:45 PM	Docked
19-Nov	Cruising			
20-Nov	Wellington, New Zealand	7:00 AM	4:00 PM	Docked
21-Nov	Cruising			
22-Nov	Cruising			
23-Nov	Sydney, Australia	6:00 AM		

Please join us for the fun and festivities on this exciting cruise!

Bookings must be made through Card Player Cruises to have access to the poker room.

Book today to receive the best cabin selection
Call Card Player Cruises at 888/999-4880 or 702/655-0919

Cruise Highlights

Card Player Cruises invites you to visit these exotic ports with us!



Noumea, New Caledonia:

Nouméa, the charming capital of New Caledonia, has quite a few things to brag about. It's the third largest island in the South Pacific. It's home to the world's largest lagoon and second largest coral reef. And if that's not enough, it's part French. The cuisine is fabulous. The shopping, well, can you say haute couture? And you're never very far from a full-bodied glass of French wine. And yes, you also get to visit places like Pierre Vernier Walk, Baie des Citrons, and Place des Cocotiers. Which are almost as much fun to say as they are to see.

Lautoka, Fiji:

The city of Lautoka is situated on the northwest coast of the island of Viti Levu. The second-largest city of Fiji, Lautoka serves an important sugarcane-growing district and is the country's leading sugar export port. As a place with a vibrant population and a colorful life, the cultural lifestyle of the people here are worth exploring. The natural wonders of Lautoka, Fiji are just as outstanding. The dancing waves of the sea, the sandy beaches and the waving trees all are there to offer you a refreshing and memorable visit.



Auckland, New Zealand:

With a population of 1.3 million people, including immigrants from all over the world and a heavy concentration of Polynesian people, Auckland is far and away New Zealand's largest and most cosmopolitan city. Called the "City of the Sails" because of its beautiful location between two harbours and great weather, Auckland is a big fish on a small island and a swank city in a rural country.

Tauranga, New Zealand:

Tauranga lies in the heart of the Bay of Plenty region, about 2.5 hours south of the city of Auckland. It has become one of New Zealand's fastest-growing areas thanks to plentiful sunshine and beautiful beaches. But with a population of only about 100,000, Tauranga can still offer you generous space to yourself. In fact, the densest concentration of attractions, and perhaps the biggest crowds, is on The Strand in the downtown area. Tauranga also hosts a variety of festivals throughout the year, including arts, comedy, film, jazz and blues.



Wellington, New Zealand:

The fact that Wellington has become New Zealand's fastest-growing weekend destination tells you something about the city. Once merely its political capital, the city's calendar is packed with celebrations, festivals and some of the country's best theater and dance. Sandwiched between steep hills on one side and the ocean on the other, New Zealand's second-largest city is a walker's paradise. Because so much of the city is within walking distance, you'll never feel the need to hire a cab. And considering the number of cafés, bars and nightclubs that line the streets, you'll probably never feel the need to go to bed, either.

Book today to receive the best cabin selection
Call Card Player Cruises at 888/999-4880 or 702/655-0919

Staterooms - Voyager of the Seas



Owner's Suite: Queen-size bed, private balcony, separate living area with queen-size sofa bed, private bathroom with bathtub, separate shower and bidet, and concierge service. (559.7 sq. ft., balcony 90.4 sq. ft.) Also includes dry bar, minibar, entertainment center including a 42" flat screen TV, stereo and VCR, dinette for four, walk-in closet, vanity area, hair-dryer, phone, computer jack, vanity table with an extendable working surface for laptop computers and 110/220 electrical outlets. Sleeps up to four and can accommodate a rollaway bed and/or Pack 'n Play. **Category OS**



Grand Suite: Two twin beds (can convert into queen-size), private balcony, sitting area (some with sofa bed), and concierge service. (349.8 sq. ft., balcony 100.1 sq. ft.) Also includes minibar, TV, stereo, VCR, larger private bathroom with bathtub and double sink, vanity area, hair-dryer, phone, vanity table with an extendable working surface for laptop computers and 110/220 electrical outlets. Sleeps up to four people and can accommodate a rollaway bed and/or Pack 'n Play. **Category GS**



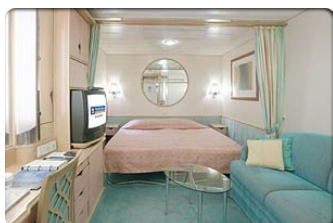
Junior Suite: Two twin beds (can convert into queen-size), private balcony, private bathroom with bathtub and a sitting area. (264.8 sq. ft., balcony 75.3 sq. ft.) Also includes minibar, vanity area, hair-dryer, TV, phone, vanity table with an extendable working surface for laptop computers and 110/220 electrical outlets. Some have sofa beds and can accommodate 3-4 guests. Some can also accommodate a rollaway bed or Pack 'n Play. **Category JS**



Balcony: Two twin beds (can convert into queen-size), private balcony, sitting area and a private bathroom. (179.8 sq. ft., balcony 52.7 sq. ft.) Also includes minibar, vanity area, hair-dryer, TV, phone, vanity table with an extendable working surface for laptop computers and 110/220 electrical outlets. Some have a Pullman bed and/or a sofa bed and can accommodate 3-4 guests. Some can also accommodate a rollaway bed or Pack 'n Play. **Category D2 & D3**



Ocean View: Two twin beds (can convert into queen-size), sitting area with sofa, vanity area and a private bathroom. (164.7 sq. ft.) Also includes minibar, hair-dryer, TV, phone, vanity table with an extendable working surface for laptop computers, and 110/220 electrical outlets. Some have Pullman beds and can accommodate 3-4 guests. **Category H**



Inside: Two twin beds (can convert into queen-size), Pullman beds, sitting area, vanity area, and a private bathroom. (150.7 sq. ft.) Also includes minibar, hair-dryer, TV, phone, vanity table with an extendable working surface for laptop computers, and 110/220 electrical outlets. Some have Pullman beds and can accommodate 3-4 guests. **Category M**

Stateroom availability is subject to change without notice. Please contact us for more details.

Book today to receive the best cabin selection

Call Card Player Cruises at 888/999-4880 or 702/655-0919

Voyager of the Seas

Ship Highlights

This ship is a revolutionary marvel of naval engineering. Enjoy one-of-a-kind features like an ice-skating rink, the Royal Promenade and a rock-climbing wall, just for starters.

The 138,000-ton, 3,114-guest Voyager of the Seas became the world's largest cruise ship when it entered service in November 1999. Innovations add up to more space for every guest, and include enhanced staterooms, expanded dining options and exceptional recreational facilities.

The Voyager of the Seas is commonly referred to as a 'Floating hotel' due to the vast range of facilities that it offers, along with some world firsts for cruise ships when the ship was launched. Voyager features the world's first rock climbing wall (mounted on the funnel) and ice-skating rink at sea. Another innovative feature of Voyager of the Seas and another world first is the Royal Promenade which is a marble floored street stretching just over 3/4 the length of the ship and features shops and light dining venues. This area is the heart of the ship for evening activity , along with the three story high 'La Scala' theatre in which some of the latest production technology is used to produce Broadway standard production shows at night.

Ship Features

- Ice-skating rink
- Rock-climbing wall
- In-line skating
- Royal Promenade (open 24 hours)
- Johnny Rockets® '50s-style restaurant
- Portofino Italian Restaurant
- Themed bars and lounges
- Casino RoyaleSM
- Golf simulators
- 9-hole miniature golf course
- Adventure Ocean® youth facilities
- Day Spa and Fitness Center
- Full-size basketball court

Ship Facts

- Maiden Voyage: November 21, 1999
- Passenger Capacity: 3,114 double occupancy; 3,840 maximum
- Godmother: Katarina Witt
- Gross Tonnage: 137,276
- Length: 1020'
- Max Beam: 154.7'
- Draft: 29'
- Cruising Speed: 22 knots

Things to do:

- Challenge yourself on a rock-climbing
- Play a basketball game
- Sample cuisine and wines from around the world
- Relax in the Day Spa
- Soak up the sun in our stunning Solarium
- Play a round of golf at the indoor/outdoor country club with golf simulator
- Give the kids a vacation to remember with their award-winning Adventure Ocean® Youth Program

**The excitement never stops on a
Card Player Cruises poker cruise!**

Book today to receive the best cabin selection
Call Card Player Cruises at 888/999-4880 or 702/655-0919

Poker Room



Card Player Cruises proudly features a professional, fully staffed, non-smoking poker room.

The poker room will be closed while in port, but is open for play on sea days and after the first-seating dinner on port days.

The Card Player Cruises staff will be happy to spread any game and limit that enough players want to play.

Please be aware that on the annual international cruise, the poker room closes earlier than on domestic cruises (usually by 1am) so that passengers and staff are able to enjoy the ports.

Great poker action - Exciting ports

Don't miss this cruise!

Book today to receive the best cabin selection
Call Card Player Cruises at 888/999-4880 or 702/655-0919